



# VERMONT AGRICULTURE & ENVIRONMENTAL LABORATORY

LEGISLATIVE  
PRESENTATION  
2017 LEGISLATIVE SESSION

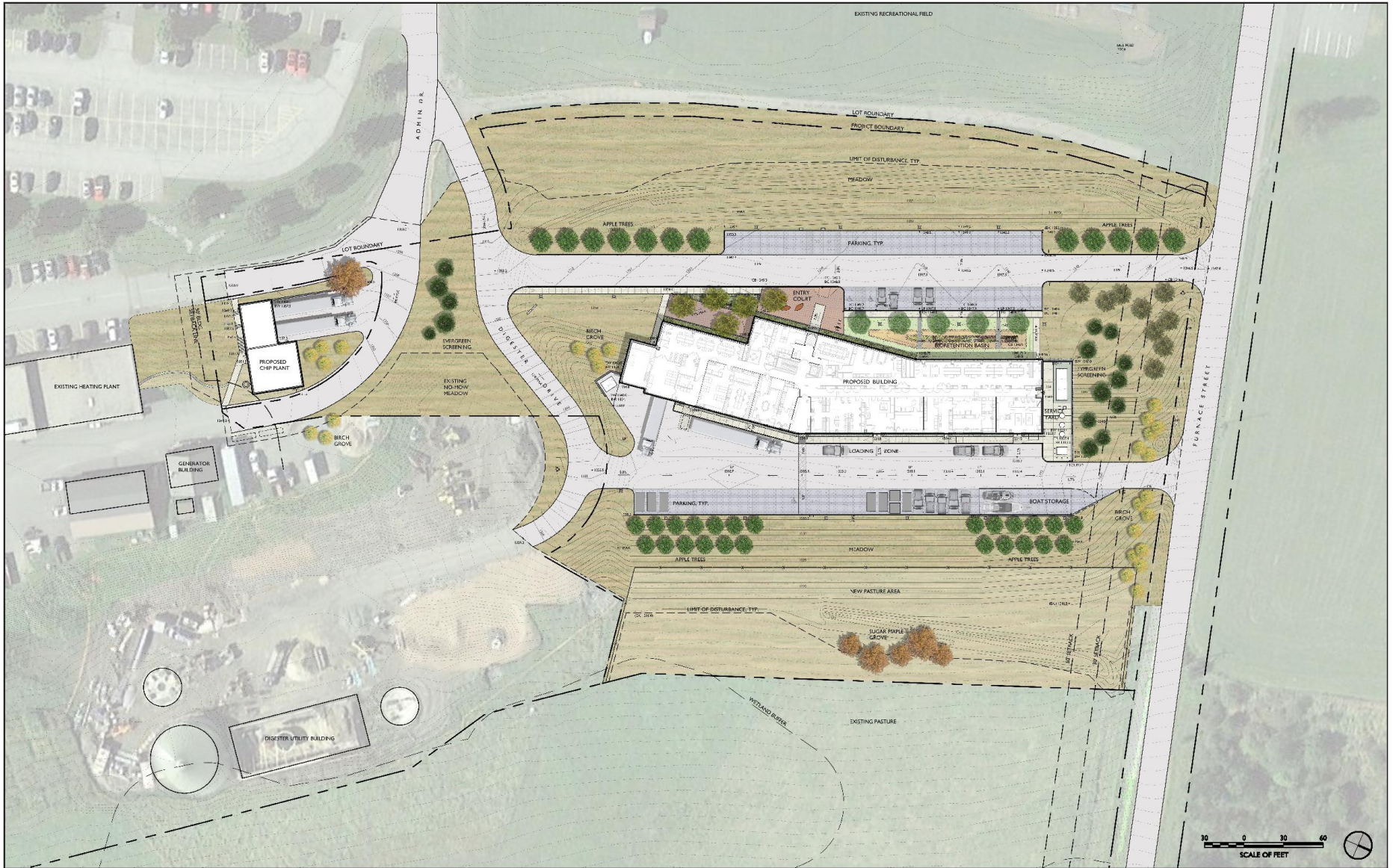






**Site Location: North edge of VTC's campus**











VERMONT  
AGRICULTURAL AND  
ENVIRONMENTAL  
LABORATORY  
163 ADAMS DRIVE  
RANDOLPH CENTER, VERMONT 05061

**CANNONDESIGN**

**vhb**  
**WAGNER HODGSON**  
LANDSCAPE ARCHITECTURE

- CANNONDESIGN  
Architectural Firm #00100  
60 Summer Street, Suite 500  
Boston, MA 02110
- STATE OF VERMONT DEPARTMENT OF  
BUILDINGS & GENERAL SERVICES  
Chief  
2 Dummer Street  
Montpelier, VT 05633-3001
- VERMONT STATE COLLEGE  
Landscape  
675 Colgate  
Randolph Center, VT 05061
- FREEMAN FRENCH FREEMAN  
Architectural Associates  
15 Main Street  
Burlington, VT 05401
- KNIGHT CONSULTING ENGINEERS  
Geotechnical Engineer  
11 Knoll Lane  
Wilton, VT 05495
- HYNE ENGINEERS  
1000 Colchester Rd., 303  
Roxbury, MA 02091
- WAGNER HODGSON  
Landscape Architect  
Burlington, VT 05401
- YANASE LAMSON BRISTLIN  
1001 N. State  
North Ferrisburgh, VT 05473
- KRESS & LAMOND ENGINEERS  
Architect  
Colchester, VT 05446
- VERMONT LENS CONSULTING  
415 Acorn Street, 4th Floor  
Boston, MA 02115

ACT 250 PERMITTING SET  
JULY 06, 2016

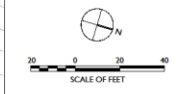
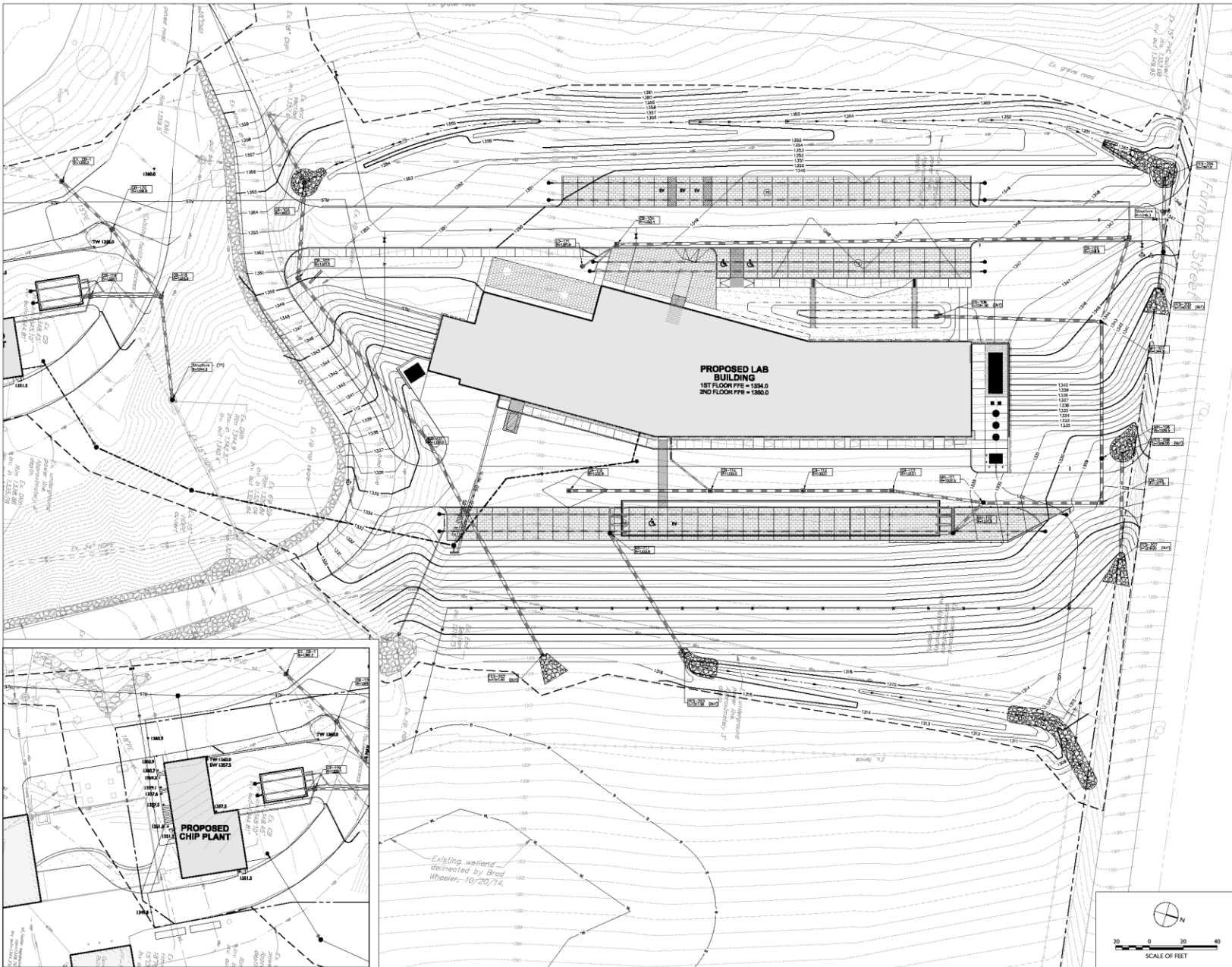
- 3 Design Development 22 APRIL 2016
- 2 50% Design Development 08 MARCH 2016
- 1 Schematic Design 20 MAY 2015



**GRADING AND DRAINAGE PLAN**

Scale: Issue Date: 07/06/2016  
Project No.: 09814-03 Checked by:

**C0201**



© Cannon Design 2015  
 All rights reserved.  
 44202016 1311 01 PM

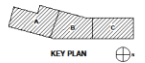




- CANNONDESIGN  
Architectural Planning/M/PEP  
68 Sumner Street, Suite 600  
Burlington, VT 05401
- STATE OF VERMONT  
BUILDING & GENERAL SERVICES  
101
- FREEMAN FRENCH FREEMAN  
Architects  
81 Maple Street  
Burlington, VT 05401
- KNOX CONSULTING ENGINEERS  
Mechanical/Electrical  
11 Knight Lane  
Windsor, VT 05495
- HOME ENGINEERS  
Civil/Structural  
101 Longwater Circle, Suite 203  
Roxbury, MA 01567
- WARNER HODGSON  
Landscape Architects  
7 Maple Avenue  
Burlington, VT 05401
- VANASSE HANGEN BRUSTLIN  
Civil Engineers  
1000 U.S. Street, N  
North Ferrisburgh, VT 05473
- KREBS & LAMING ENGINEERS  
Surveying  
84 Main Street  
Colchester, VT 05445
- VERMONT LENS CONSULTING  
Civil/Structural  
410 Adams Avenue, 4th Floor  
Burlington, VT 05401

DESIGN DEVELOPMENT  
PROGRESS SET  
MARCH 08, 2016

3	Design Development	28 APRIL 2016
2	50% Design Development	08 MARCH 2016
1	Schematic Design	28 MAY 2015
No.	Description	Date

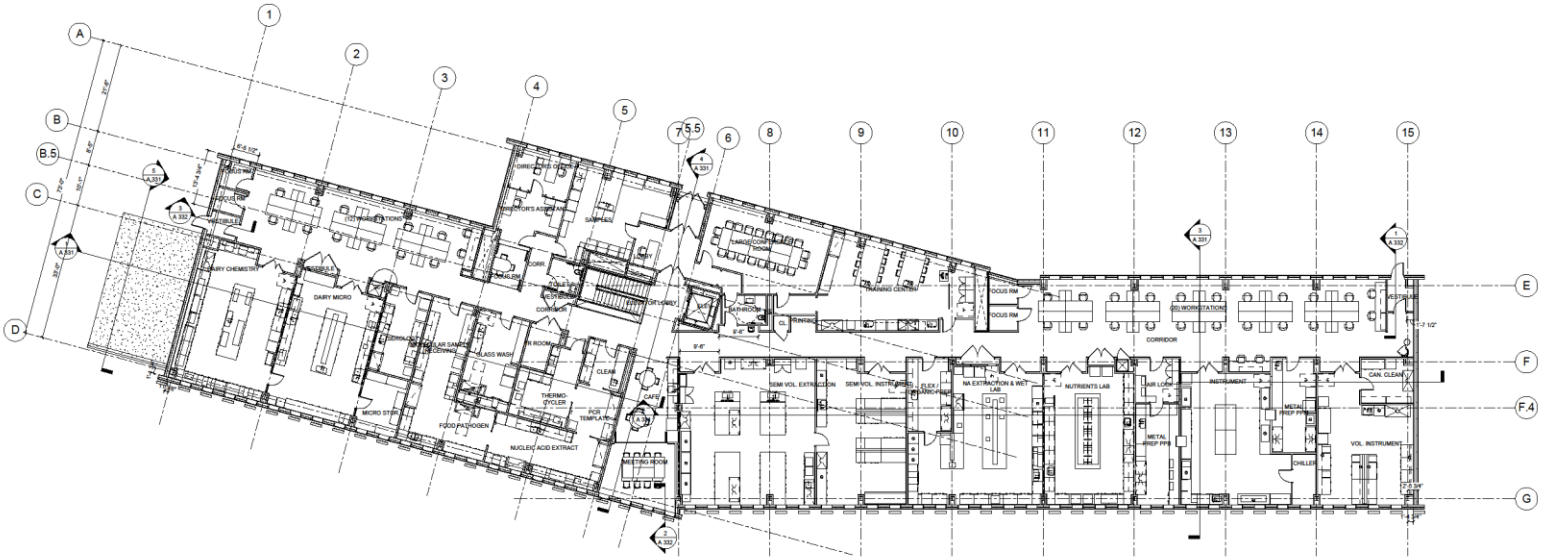


Drawing Title

LEVEL 02 FLOOR PLAN

Scale:	AS NOTED	Issue Date:	05/26/2016
Project No.:	09614-02	Checked By:	RF

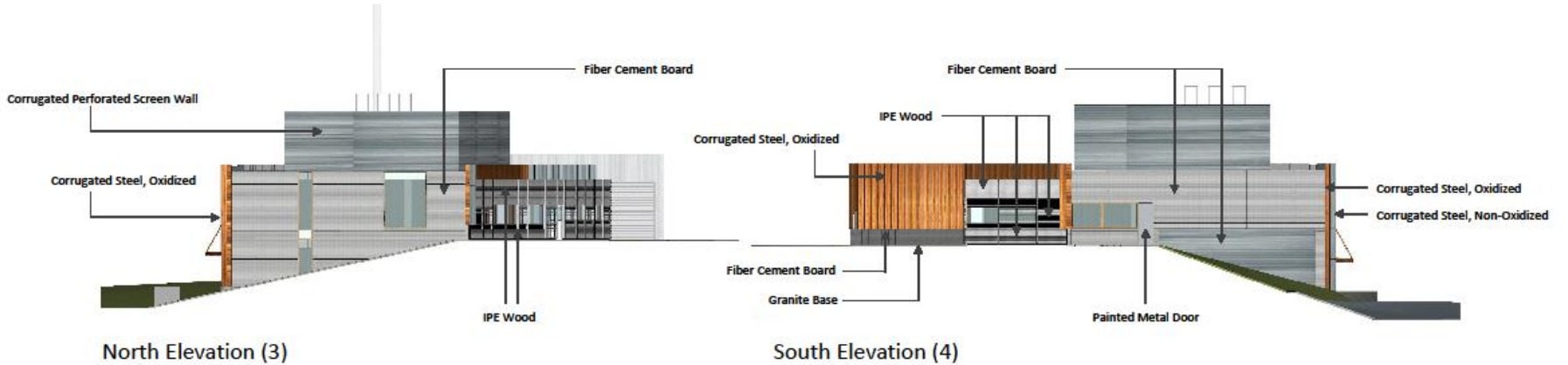
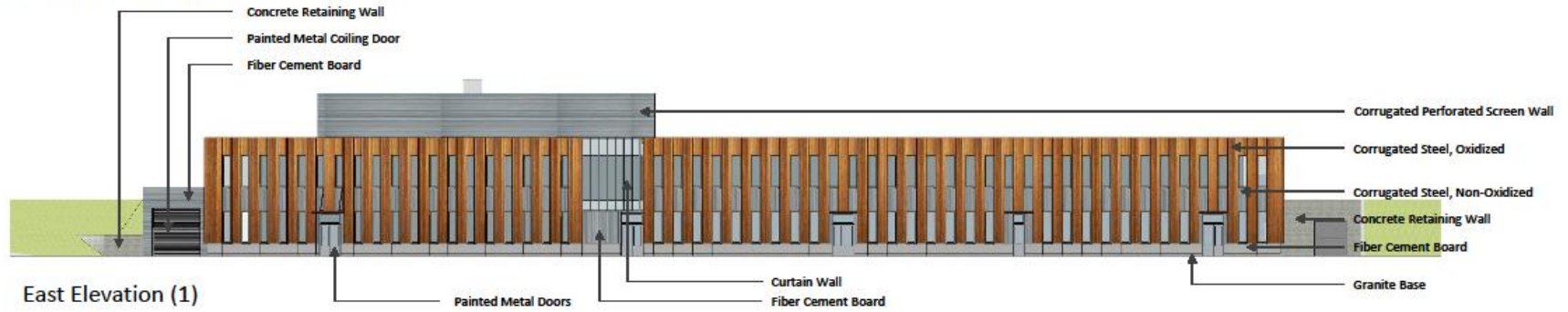
A 101



1 SECOND FLOOR PLAN  
3/8/16 - 11'6"

© Cannon Design 2016  
All Rights Reserved  
1000 Main Street, Suite 200  
Burlington, VT 05401  
1-800-741-4339

Building Elevations – Attachment No. VAEL SI 5.1





# Where we are now:

- Legal
- Permits
- Design
- Construction
- Occupancy